



## Streamline Your Meetings

- ▶ Panaboard Overlayer Software\* Compatibility \*Available for downloading from our website.
- ▶ PC/USB Memory Device Function
- ▶ Sleek, Low Profile Body
- ▶ User Friendly Interface
- ▶ Energy-Saving Design



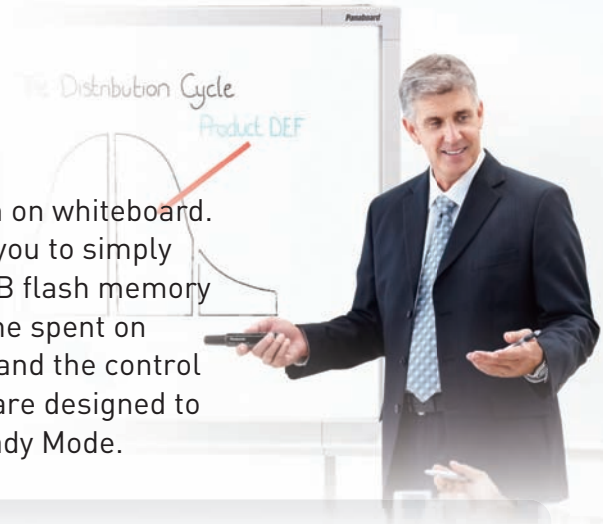
UB-5835



UB-5335

# Talk More! — Write Less!

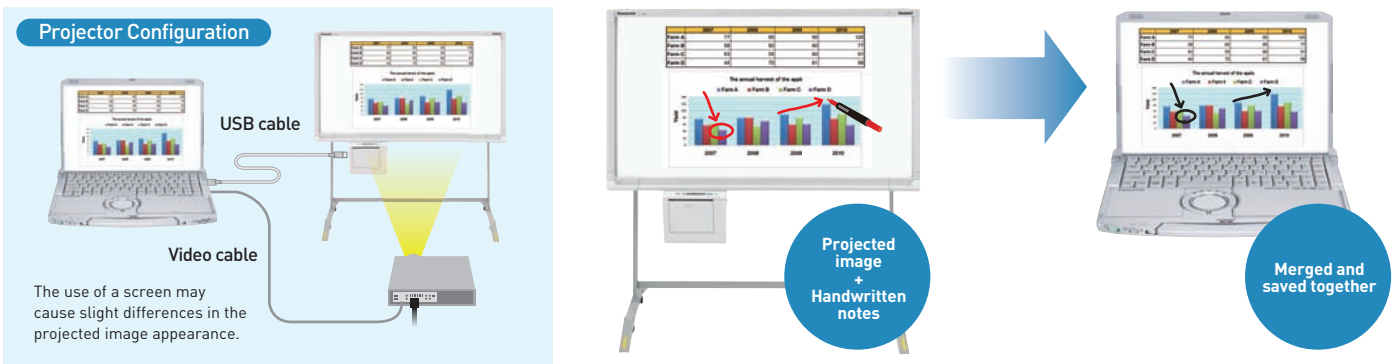
Put an end to meetings where everyone has to take notes, written on whiteboard. The Panasonic electronic whiteboards with built-in printer allow you to simply print your notes or directly save them as a PDF/TIFF on PC or USB flash memory device. This makes meetings more efficient by eliminating the time spent on handwriting notes. The low profile whiteboard body saves space, and the control panel is easy to use. Plus, the Panasonic electronic whiteboards are designed to consume as little energy as possible, even when the unit is in Ready Mode.



## Panaboard Overlayer Software\* Compatibility

### Share and Save Meeting Notes with a PC and Projector

Panaboard Overlayer Software\* allows you to utilise a projector to display information from your PC onto the whiteboard, while allowing you to write notes on the board. When the meetings finished, you can save these handwritten notes from the electronic whiteboard to your PC, which can then be merged with the projected image displayed from your PC as a PDF/TIFF file. Documents created with Panaboard Overlayer Software can then be easily distributed to all meeting participants, eliminating the need for handwritten notes.



\*Panaboard Overlayer Software can be downloaded from the following website.  
[http://panasonic.net/pcc/support/eboard/download/metallicsoft.html#Panaboard\\_Overlay\\_5835](http://panasonic.net/pcc/support/eboard/download/metallicsoft.html#Panaboard_Overlay_5835)

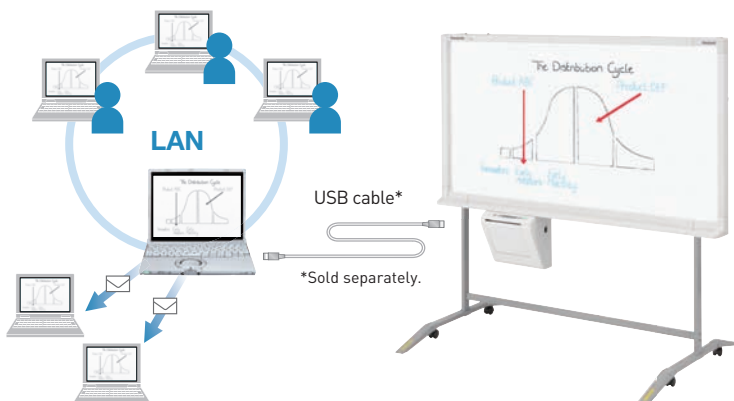
**[System Requirements]**  
Operating System: Windows® XP SP3 or later / Windows Vista® SP2 or later / Windows 7® SP1 or later (Windows® XP 64-bit edition is not supported.)  
Web Browser: Internet Explorer 6.0 or later

## PC/USB Memory Device Function

### Save Data Directly onto a PC or USB Flash Memory for Efficient File Sharing

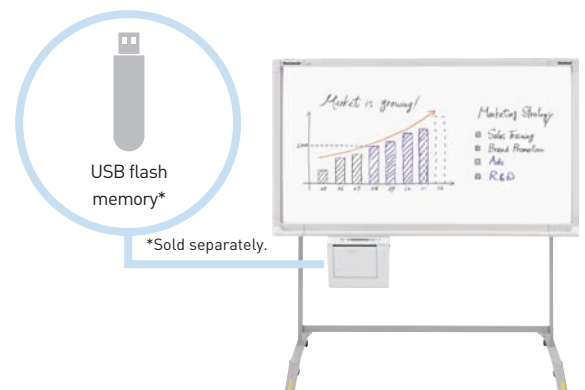
#### Scan and Save onto a PC

Save handwritten notes from the whiteboard directly onto a PC by simply using a USB cable to connect the whiteboard to a PC. No software or device drivers required.



#### Scan and Save onto a USB Flash Memory

You can digitally save information written onto the whiteboard directly to a USB flash memory device.



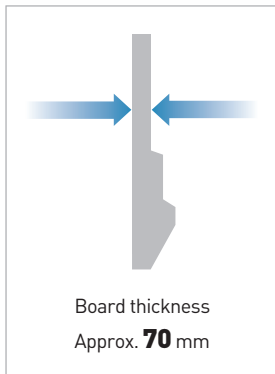


## Sleek, Low Profile Body

### Approximately 70 mm Thick for Easy Wall Mounting

The UB-5835 / UB-5335 Electronic Whiteboard is designed to blend nicely with any office interior, and the slim board, which is approximately 70 mm thick, allows for easy wall mounting.

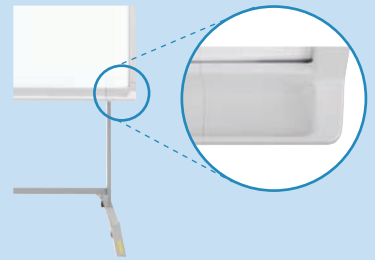
#### Slim board



### +Plus

#### Easy-to-Clean Pen Tray

A gently curved edge makes it easy to clean marker debris.

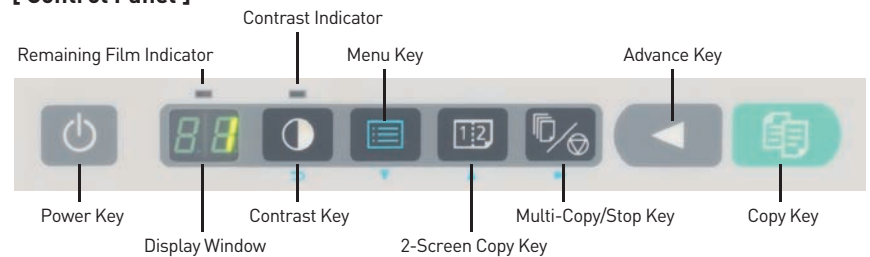


## User Friendly Interface

### All Controls Are Accessible via the Control Panel

The large control panel of the UB-5835 / UB-5335 is designed for maximum ease of use. The power key is also located on the control panel, making all operations possible right from the panel.

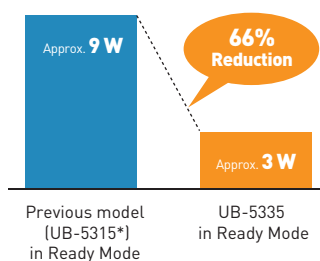
#### [ Control Panel ]



## Energy-Saving Design

### Ready Mode

The power consumed during standby has been reduced by 2/3 compared with our previous models.

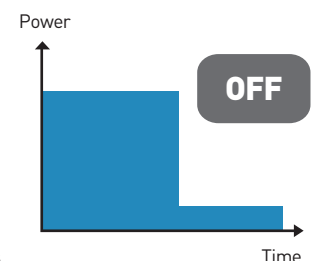


\*The UB-5315 was introduced in April 2003.



### Auto Power Off function\*

The power automatically turns off if the unit is not used for approximately one hour after being in Ready Mode. This helps reduce energy costs, if the last person forgets to turn off the power switch.

\*Approximately 0.5 W of electricity is consumed even if the power is turned off. The Auto Power Off function can be disabled by the key operator. Also, certain device conditions may prevent the Auto Power Off feature to be activated.



## Specifications

Model Number	UB-5835	UB-5335
		
	Stand is optional.	Stand is optional.
<b>General</b>		
Power Supply	AC 100 - 120 V / AC 220 - 240 V, 50/60 Hz	
Power Consumption	1.4 A / 0.7 A (Power OFF: Less than 0.5 W)	
External Dimensions*1 (H x W x D, without stand)	1,334 x 1,735 x 212 mm (52.5 x 68.3 x 8.3 in.)	1,334 x 1,372 x 212 mm (52.5 x 54.0 x 8.3 in.)
Weight*1 (without stand)	27 kg (59.5 lbs)	25 kg (55.1 lbs)
Operating Environment	Temperature: 10 - 35°C (50 - 95°F), Humidity: 30 - 80 % RH	
<b>Input Block</b>		
Panel Dimensions*1 (H x W)	900 x 1,625 mm (35.4 x 64.0 in.)	900 x 1,262 mm (35.4 x 49.7 in.)
Number of Sheets	2 (endless type)	
Copying Area*1 (H x W)	850 x 1,613 mm (33.5 x 63.5 in.)	850 x 1,250 mm (33.5 x 49.2 in.)
Scanning Resolution	Standard-size: 44 dpi x 44 dpi, Full-size: 61 dpi x 44 dpi	Standard-size: 61 dpi x 61 dpi
Time Required for Scanning	Approx. 15 sec/sheet	
Scanning System	CIS (Contact Image Sensor)	
<b>Paper Output Block</b>		
Printing System	Fusion thermal transfer type	
Copy Paper	Standard / Recycled paper (60 - 90 g/m <sup>2</sup> / 16 - 24 lbs)	
Copy Paper Size	A4	
Copy Density	8 dots/mm	
Copy Colour	Monochrome	
Continuous Copies	1 to 9	
Contrast Adjustment	Two levels: Normal / Dark	
2-Screen Compressed Copying	Yes	
<b>Memory Output Block</b>		
Supported Memory Type	USB Flash Memory Device (Sold separately)	
USB Interface	Full Speed USB 2.0 (A-type connector)	
Supported Formats	FAT(FAT16)/FAT32 (up to 32 GB)	
Storage File Formats	TIFF, PDF	
Storage File Colour	Monochrome	
<b>System Requirements</b>		
Computer	IBM® PC/AT or compatible machine	
CPU	Intel® Pentium II or higher processor	
Interface	Full Speed USB 2.0 (B-type connector)	
Operating System	Windows® XP (SP3 or later), Windows Vista®, Windows® 7	
Included Accessories and Consumables	2 Black Markers / Eraser / Thermal Transfer Film (starter roll) / Wall-Mounting Brackets / Power Cord / Lithium Battery / Warranty Card / Operating Instructions / Installation Manual	
<b>Optional Accessories</b>		
Stand	UE-608005	
Replacement Film	UG-6001 (2 rolls, 50 m (164.0 ft.))	
Markers	KX-B031 (10 black markers) / KX-B032 (10 red markers) / KX-B033 (10 blue markers)	
Erasers	KX-B042 (6 erasers)	
Marker and Eraser Set	KX-B035 (1 black, 1 red, 1 blue, 1 eraser)	

\*1 Dimensions and weights are approximate.



The Panasonic Group strives to be a Green Innovation Company with a global perspective.

### Panasonic's Environmental Efforts

Panasonic aims to become the No.1 Green Innovation Company in the Electronics Industry. We believe we can integrate contribution to the environment with business growth by driving green innovation in all aspects of our business practices, and help people lead better and greener lives.

#### Trademarks and registered trademarks

- Microsoft Windows and Windows Vista are registered trademarks of Microsoft Corporation in the United States and/or other countries.
- IBM is a trademark of International Business Machines Corporation in the United States, other countries, or both.
- Intel and Pentium are trademarks of Intel Corporation in the U.S. and other countries.

#### Important

- Safety Precaution: carefully read the operating and installation instructions before using this product.

Design and specifications are subject to change without notice. All photographs in this brochure are simulated.

This product is designed to reduce hazardous chemical substances to meet the RoHS directive.

DISTRIBUTED BY :

# Panasonic

Electronic Whiteboard: <http://panasonic.net/pcc/eboard/>